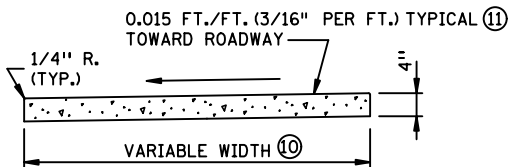


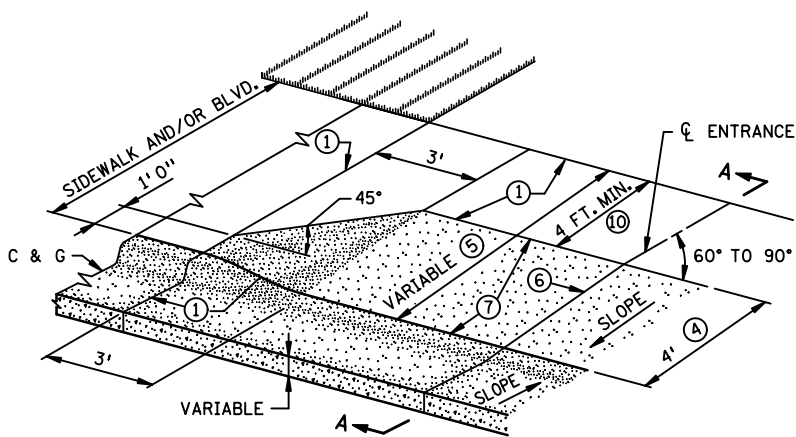
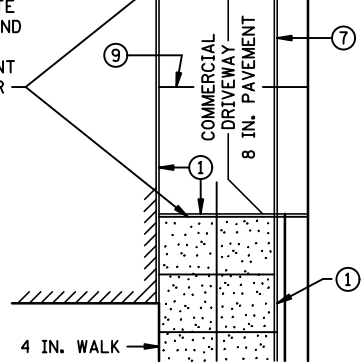
PLAN



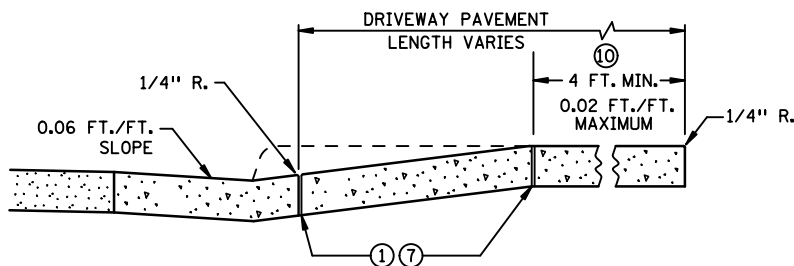
SECTION THRU WALK

CONCRETE WALK

PROVIDE INTERMEDIATE JOINT AT SQUARED END IN SIDEWALK, WHEN SIDEWALK IS ADJACENT TO CURB AND GUTTER



HALF PLAN PERSPECTIVE



SECTION A-A
CURB RETURN

NOTES:

- SEE ROAD DESIGN MANUAL, CHAPTER 5, FOR GEOMETRIC DESIGN OF ENTRANCES.
- WHERE THE MAX. ALLOWABLE ENTRANCE GRADIENT WOULD BE EXCEEDED, DUE TO THE POSITION OF EXISTING WALK, THE WALK SHALL BE REMOVED AND REPLACED, OR THE PAVEMENT WARPED TO PROVIDE THE REQUIRED ENTRANCE SLOPE.
- SEE PLANS FOR PLACEMENT OF WALK AND DIMENSIONS FOR CONSTRUCTION OF DRIVEWAYS.
- NO DEDUCTION SHALL BE MADE IN CURB & GUTTER FOR ENTRANCE.
- ① 1/2 IN. EXPANSION JOINT. 1/2 IN. PREFORMED JOINT FILLER MATERIAL, AASHTO M 213 (REQUIRED WHEN 2 CONCRETE AREAS ARE POURED SEPARATELY).
- ② 1/2 IN. EXPANSION JOINTS AT 60 FT. (APPROX.) MAXIMUM INTERVALS.
- ③ MATCH INPLACE DRIVEWAY THICKNESS (6 IN. MIN.).
- ④ WITHOUT SIDEWALK, PAVE ONLY TO THE END OF CURB RETURN WHEN ENTRANCE IS UNSURFACED OR CONSTRUCTION IS NOT NEEDED BEYOND THIS POINT.
- ⑤ WITH SIDEWALK, PAVE TO THE BACK OF SIDEWALK. PAID FOR AS CONCRETE DRIVEWAY PAVEMENT.
- ⑥ CONTRACTION JOINT (FORMED OR SAWED).
- ⑦ EXPANSION JOINT NOT REQUIRED IF ADJACENT SECTIONS ARE POURED MONOLITHICALLY. SEE SECTION A-A.
- ⑧ SEE PLANS FOR PLACEMENT OF PED. CURB RAMP.
- ⑨ FORM CONTRACTION JOINT AS NEEDED TO PRODUCE APPROXIMATELY SQUARE PANELS (MAXIMUM WIDTH 15 FT. BETWEEN JOINTS).
- ⑩ THE MINIMUM CONTINUOUS AND UNOBSTRUCTED CLEAR WIDTH OF A PEDESTRIAN ACCESS ROUTE SHALL BE 4.0 FT.
- ⑪ SEE PLANS FOR PROPOSED CROSS SLOPE OF THE PEDESTRIAN ACCESS ROUTE, WHICH MAY NOT EXCEED 0.02 FT./FT. AS CONSTRUCTED.

APPROVED JULY 25, 2011

[Signature]
STATE DESIGN ENGINEER

STATE OF MINNESOTA
DEPARTMENT OF TRANSPORTATION

CONCRETE WALK &
CURB RETURNS AT ENTRANCES

SPECIFICATION
REFERENCE

2301
2521
2531

STANDARD
PLATE
NO.

7035N