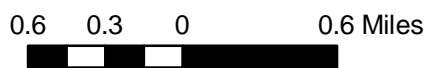


### City of Brainerd

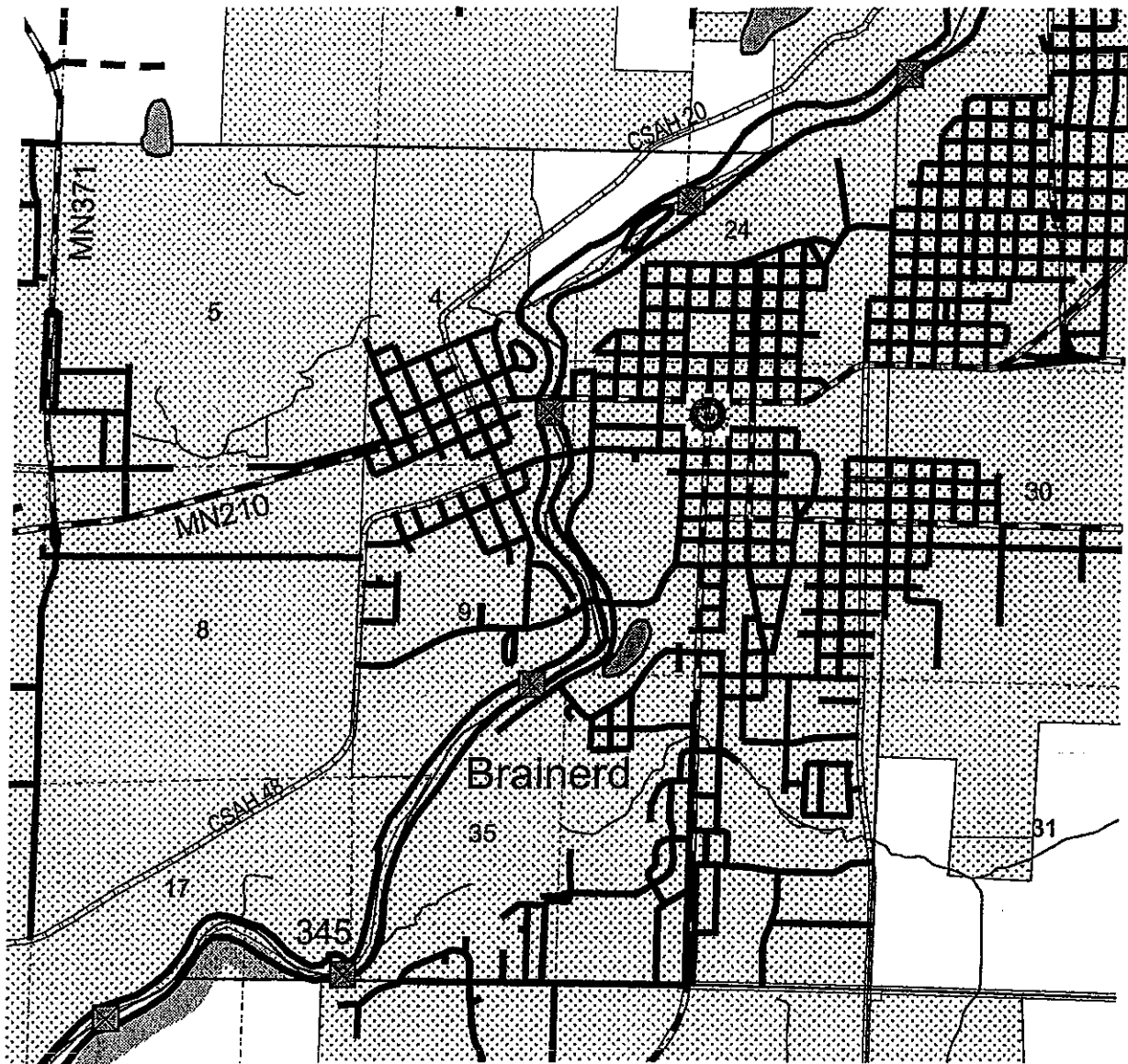
### Restricted Discharge Drainage Area



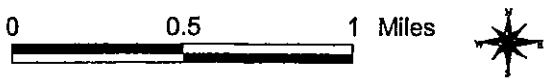
02/02/2007

# Mississippi Headwaters Corridor

Map 88



Section Lines	Roads
Township Bnd.	Trunk Highways
County Bnd.	CSAH
Cities	County Roads
MHB River Corridor	Township Roads
Lakes	City Streets
Streams	River Miles (Approx. 1 Mi. Apart)
Mississippi River	Dams
Reservation Boundary	Great River Road
Wild River	



Date: September 2000

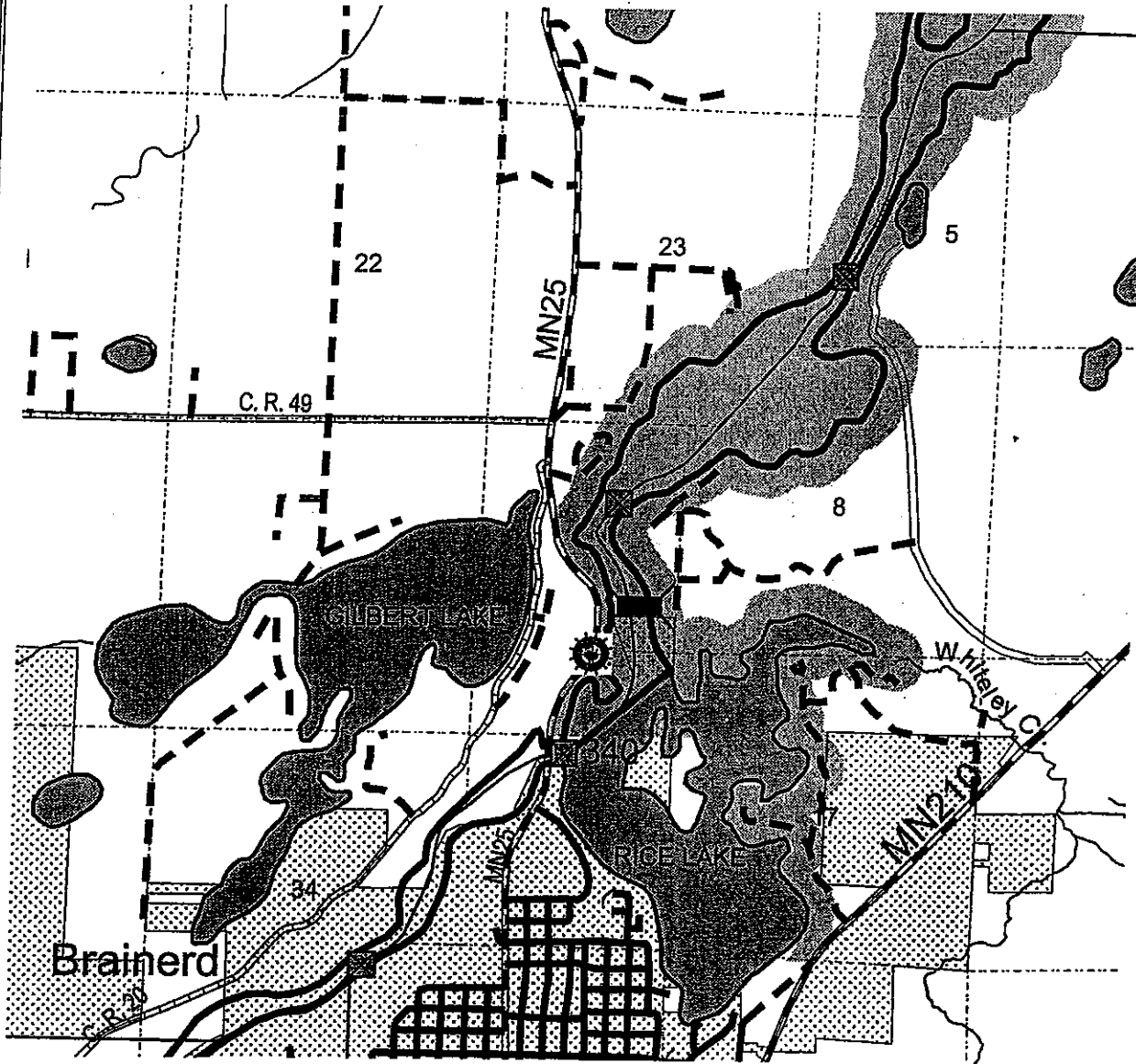
County: Crow Wing  
 Name: Oak Lawn Unorganized  
 Township: 45 N 133 N  
 Range: 31 W 28 W  
 Sections: 24-25, 35-36 4, 9  
 Class: Scenic

River Corridor Width -- At least 1,000 feet from ordinary high water mark: Wild Class  
 River Corridor Width -- At least 500 feet from ordinary high water mark: Scenic Class  
 Lake Corridor Width -- 1,000 feet from ordinary high water mark: Headwaters Lake

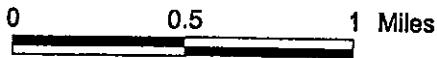
The data sets are provided without guarantee as to the accuracy or suitability for any particular purpose.

# Mississippi Headwaters Corridor

Map 82



	Section Lines		Trunk Highways
	Township Bnd.		CSAH
	County Bnd.		County Roads
	Cities		Township Roads
	MHB River Corridor		City Streets
	Lakes		River Miles (Approx. 1 Mi. Apart)
	Streams		Dams
	Mississippi River		Great River Road
	Reservation Boundary		
	Wild River		



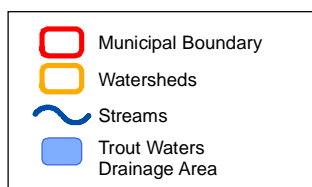
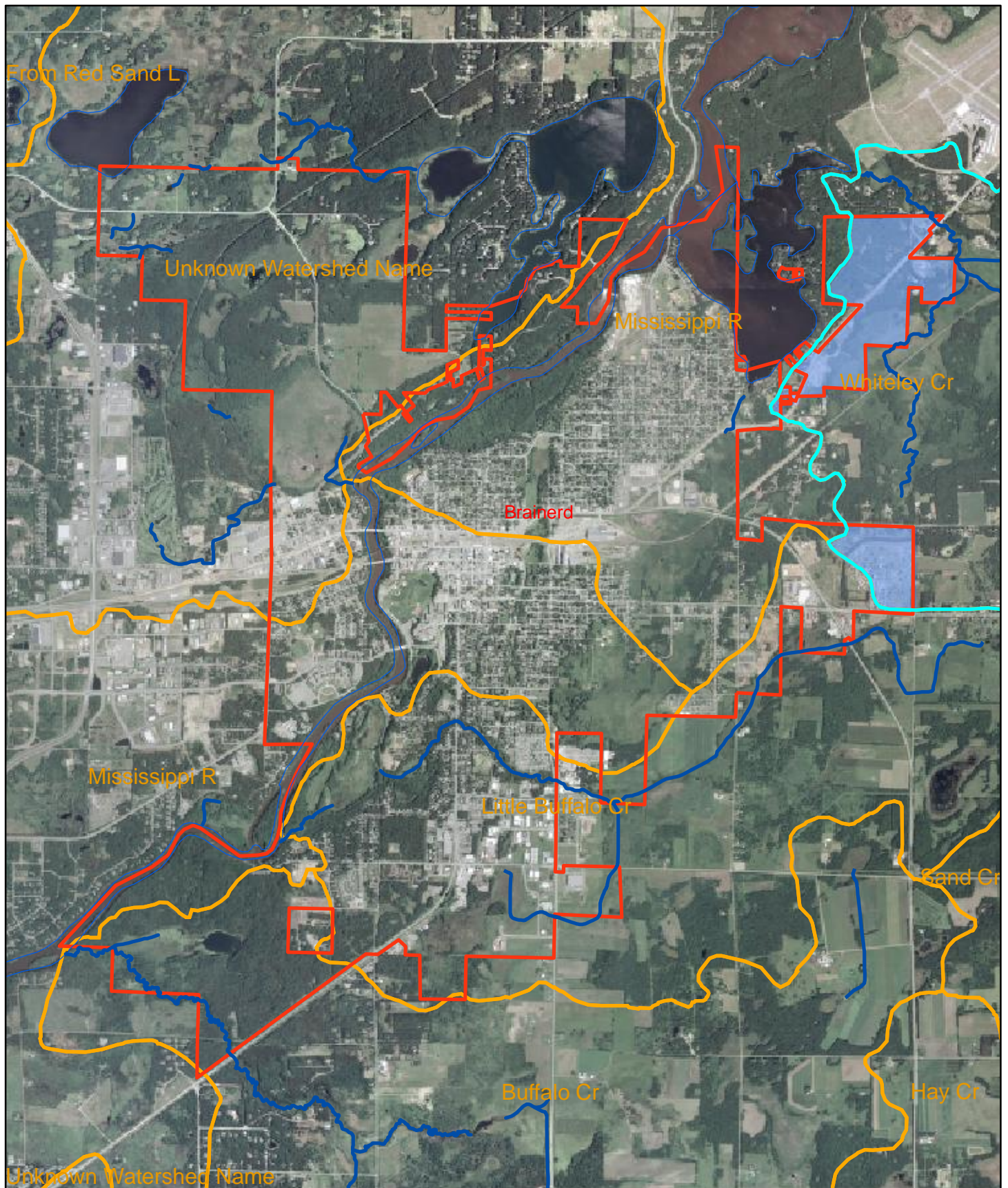
Date: September 2000

County: Crow Wing  
 Name: Unorganized  
 Township: 134 N  
 Range: 28 W  
 Sections: 22-23, 26-27, 34-35  
 Class: Scenic

Oak Lawn  
 45 N  
 30 W  
 5, 7-8, 17-18

River Corridor Width -- At least 1,000 feet from ordinary high water mark: Wild Class  
 River Corridor Width -- At least 500 feet from ordinary high water mark: Scenic Class  
 Lake Corridor Width -- 1,000 feet from ordinary high water mark: Headwaters Lake

The data sets are provided without guarantee as to the accuracy or suitability for any particular purpose.



## City of Brainerd - Whiteley Creek

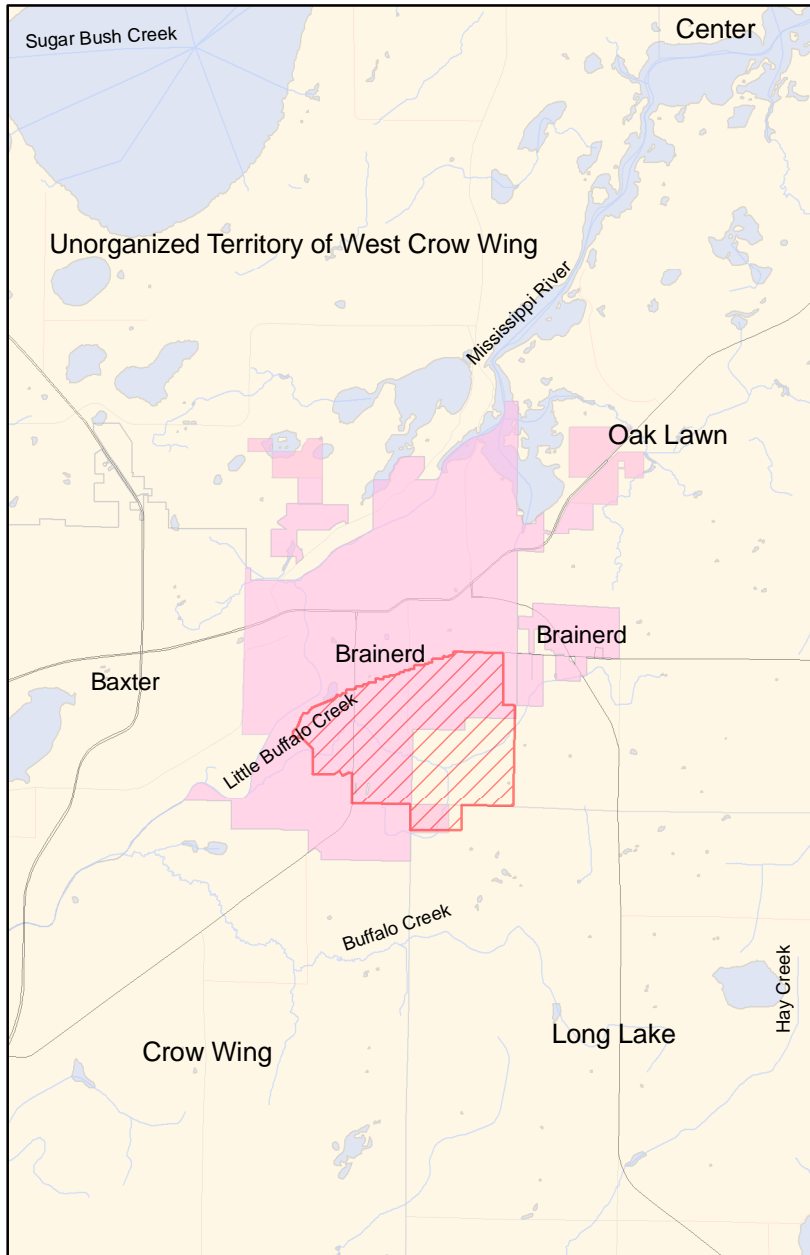
Trout Waters  
Drainage Area

0.6 0.3 0 0.6 Miles



02/02/2007

# Brainerd City MS4 DSW 9/22/2006




## Legend

### Drinking Source Waters

 Low Vulnerability

 Vulnerable

 Your MS4


 Cities/Townships

 Lakes

 Rivers


### Roads

 Interstate

 US Highway

 MN Highway

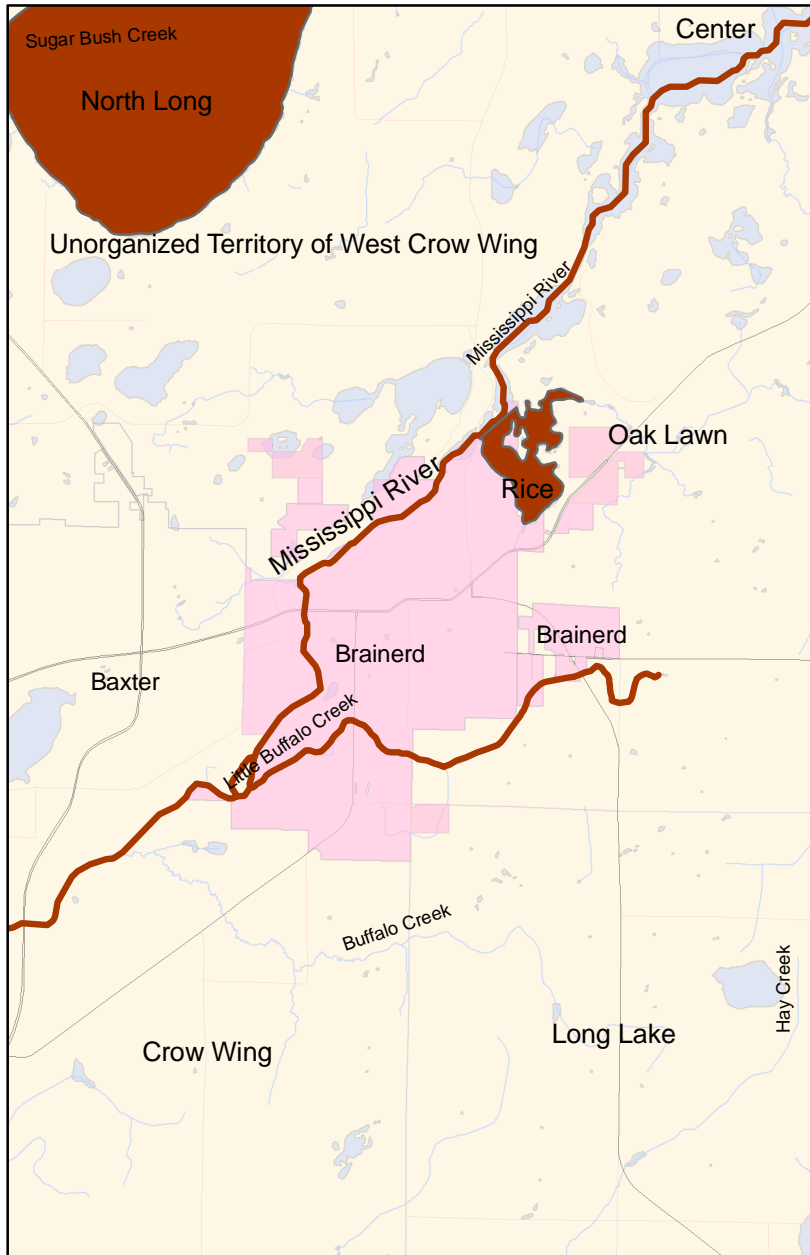
 CSAH

 County Road

0 1,600 3,200 6,400 Meters



# Brainerd City MS4 Impaired Waters 9/22/2006



## Legend

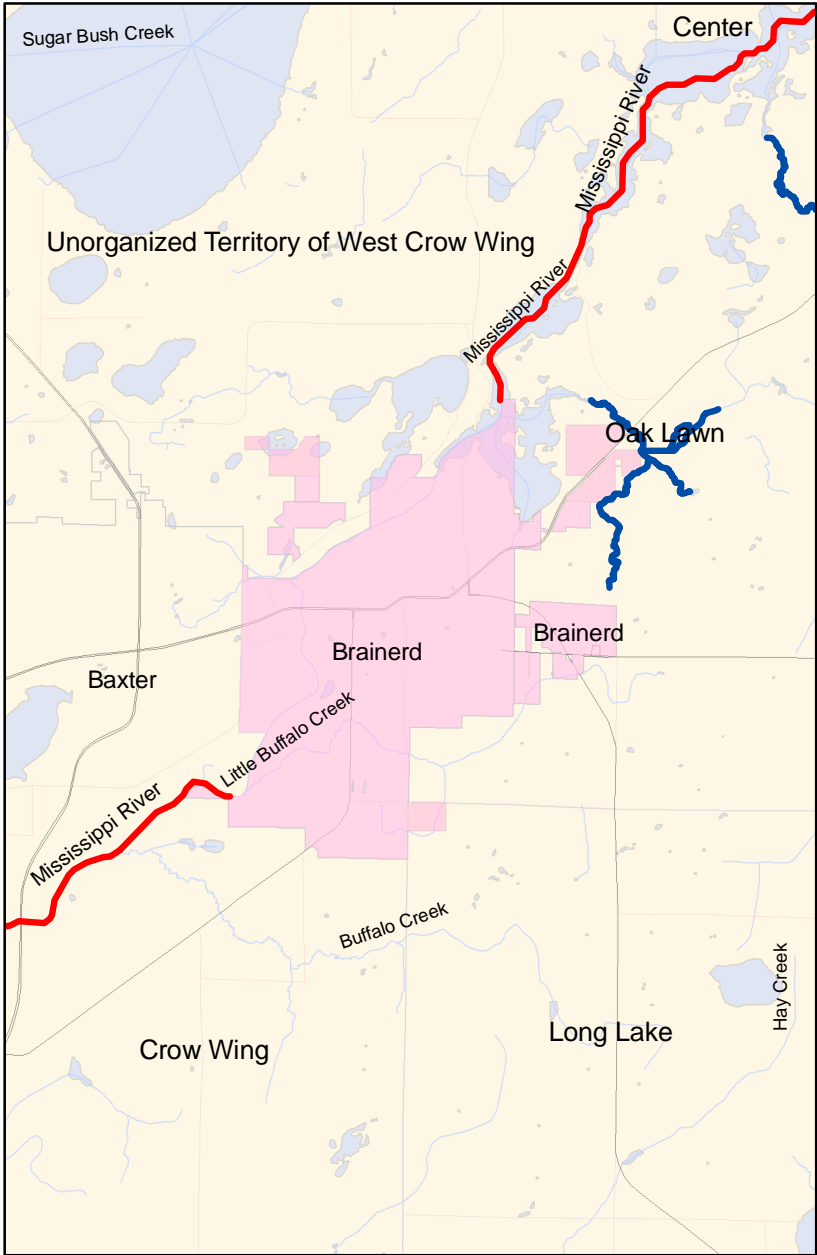
- Impaired Lakes
- Impaired Streams
- Your MS4
- Cities/Townships
- Lakes
- Rivers

## Roads












- Interstate
- US Highway
- MN Highway
- CSAH
- County Road

0 1,600 3,200 6,400 Meters

# Brainerd City MS4 Waters of Interest 9/22/2006



**Legend**

 ORVW Streams	<b>Roads</b>
 Trout Streams	
 Your MS4	
 Cities/Townships	
 Lakes	
 Rivers	
	 Interstate
	 US Highway
	 MN Highway
	 CSAH
	 County Road

