

# MAP OF STRATTONS ADDITION TO BRAINERD BY O. E. GARRISON.

Strattons addition to Brainerd comprises the south west quarter of the North west quarter of Section thirty six (36) of Township forty five (45) of Range thirty one (31) of the government survey.

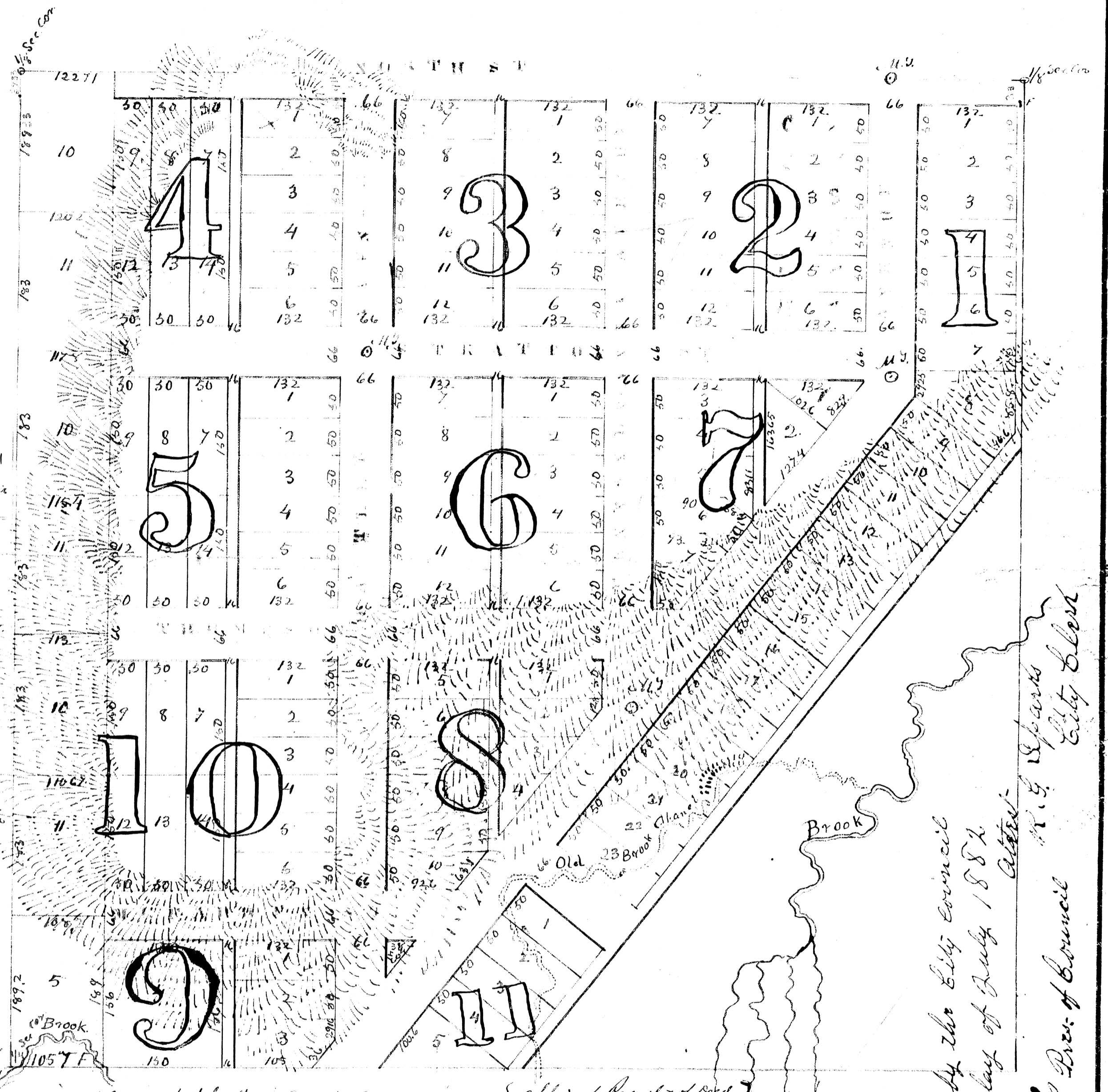
The size of the lots the width of the streets and alleys are marked on the plat. At those points marked M.S. there is to be placed stones buried in the ground with about two or three inches of earth over them and having holes about one quarter of an inch in diameter and about one quarter of an inch deep drilled in them, these holes are the initial points from which to find the position of corners to any Block or lot in this Addition.

Those streets running North and South are parallel to the eastern boundary of the addition and those streets running East and West are at right angles to those running North and South.

Bluff Avenue from the Stone Monument has a course of South.

The Variation of the Needle with Instrument over the quarter section Corner between Sections 35 & 36 was found to be 13° East, at the hour of 3.30 P.M. on the 25<sup>th</sup> day of April A.D. 1882. And ten minutes later in the day with Instrument over the 1/4 section Corner on same line the variation was found to be 12° 33' E while at other points within the survey the variation was seen to vary from 10° to 14° E.

I Herby certify that on the dates from April 13<sup>th</sup> to 21<sup>st</sup> 1882 I did with the assistance of Competent Chainmen and men, survey the south west quarter of the North west quarter of Section thirty six Township forty five Range thirty one South the Indian then surveyed the same out into lots as an addition to a city of Brainerd and I further certify that this plat



is a correct plat of such survey.

In testimony whereof I have hereunto placed my signature and official Character

O. E. Garrison

Deputy County Surveyor  
Crow Wing Co  
Minnesota

Office of Registrar of Deeds  
Crow Wing Co. Minn. I Herby certify that the within and foregoing plat was filed for record in this office on the 28<sup>th</sup> day of December A.D. 1882 at 4 o'clock P.M. and was duly recorded in Book 2 of Town Plat page 7 Miller W. Padden Registrar of Deeds Crow Wing Co. Minn.

Approved by the City Council  
this 29<sup>th</sup> day of July 1882

Attest:  
R. S. Sparks  
City Clerk  
J. J. Davis  
Pres. of Council