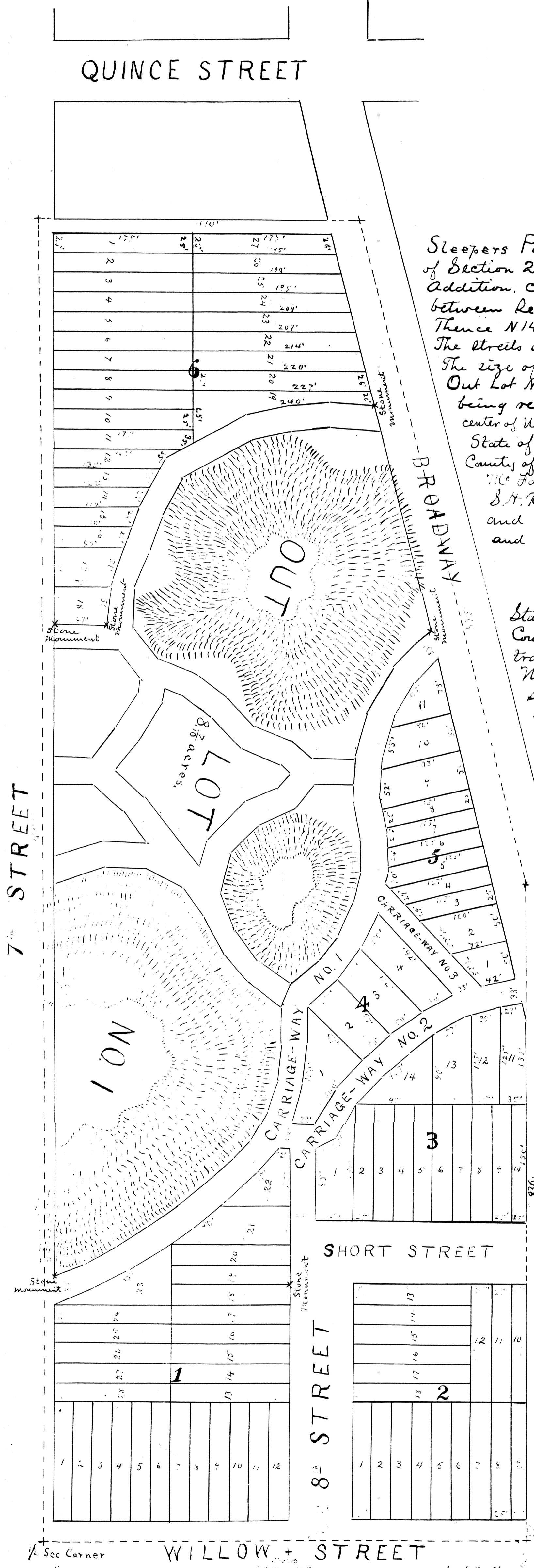


PLAT OF SLEEPER'S PARK ADDITION TO THE CITY OF BRAINERD CROW WING COUNTY MINNESOTA.



Sleepers Park Addition, to the city of Brainerd, is situated on the W 1/2 of the S.E. 1/4 of Section 25: T. 45. N. R. 31. W. 4th P.M. and contains 21.9 acres. The survey of said Addition commences at the 1/4 Section Corner, on the east and west section line between Sections 25 and 36, T. 45. R. 31: Thence east 615 feet. Thence north 836 feet. Thence N14° W. 875 feet. Thence west 410 feet. Thence south 1690 feet; to point of beginning. The streets are 80 feet wide, and the Carriage-ways 33 feet wide.

The size of all lots is designated on the plat, in red ink, and also the width of streets. Out Lot No. 1 contains 8.7 acres, and is not laid out in lots, and public streets, it being reserved for private purposes by the proprietors, Stone Monument, set in the center of Willow Street, and at the S.E. Corner of Lot 19, Block 1, on the west line of Eighth Street } S. N. Relf C. E
State of Minnesota } S.S. and on each corner of Out Lot No. 1, as shown on the Plat. } Surveyor
County of Crow Wing } On this fifth day of December A.D. 1882 Before me, Milton
McFadden, Register of Deeds, of Crow Wing County Minnesota, personally appeared
S. N. Relf, to me well known to be the identical person who made the annexed plat
and acknowledged the same to have been made by him from actual surveys,
and to be correct, to the best of his knowledge and belief.

Milton W. Fadden
Register of Deeds
Crow Wing County Minnesota

State of Minnesota } S.S.
County of Crow Wing } The undersigned, the owners of the above described
tract of land, lying, and being in the County of Crow Wing, and State of
Minnesota, has caused the same to be surveyed, and laid out, as
Sleepers Park Addition, to the City of Brainerd, as is shown, and
represented by the annexed plat, and has also caused the said plat to be
made, that the same may be recorded, according to the statutes in such
cases made and provided.

In presence of }
Milton W. Fadden }
S. N. Relf }

Chauncey B. Sleeper
Sarah L. Sleeper

State of Minnesota } S.S.
County of Crow Wing }

On this fifth day of December A.D. 1882, Before me, Milton W. Fadden, Register of Deeds, of Crow Wing County Minnesota, personally appeared Chauncey B. Sleeper and Sarah L. Sleeper, his wife, to me well known to be the persons, who executed the annexed plat, and they acknowledged that they executed the same, to the end that it might be recorded according to law.

Milton W. Fadden
Register of Deeds
Crow Wing County Minnesota

Office of Register of Deeds } S.S.
Crow Wing County Minnesota }

I hereby certify that the within, and foregoing Plat, was filed for Record in this office, on the 7th day of December A.D. 1882 at 1 O'clock P.M. and was duly recorded in Book 24 of Town Plat Page

Milton W. Fadden
Register of Deeds
Crow Wing County Minnesota

Office of City Clerk } S.S.
City of Brainerd }
Crow Wing County }
Minnesota }

I hereby certify that the annexed Plat, was approved by the City Council Dec 6th 1882

R. G. Sparks
City Clerk

A. P. Fadden
President of Council

Scale 100 feet to the inch