

HOLLAND'S SECOND ADDITION

to the

CITY OF BRAINERD

The undersigned George W Holland being the proprietor of the following described tract of land to wit: the West 1/2 of the SE 1/4 of Sec 30 Town 45 N Range 30 W of the 4th P. Mer. in the City of Brainerd, County of Crow Wing and State of Minnesota

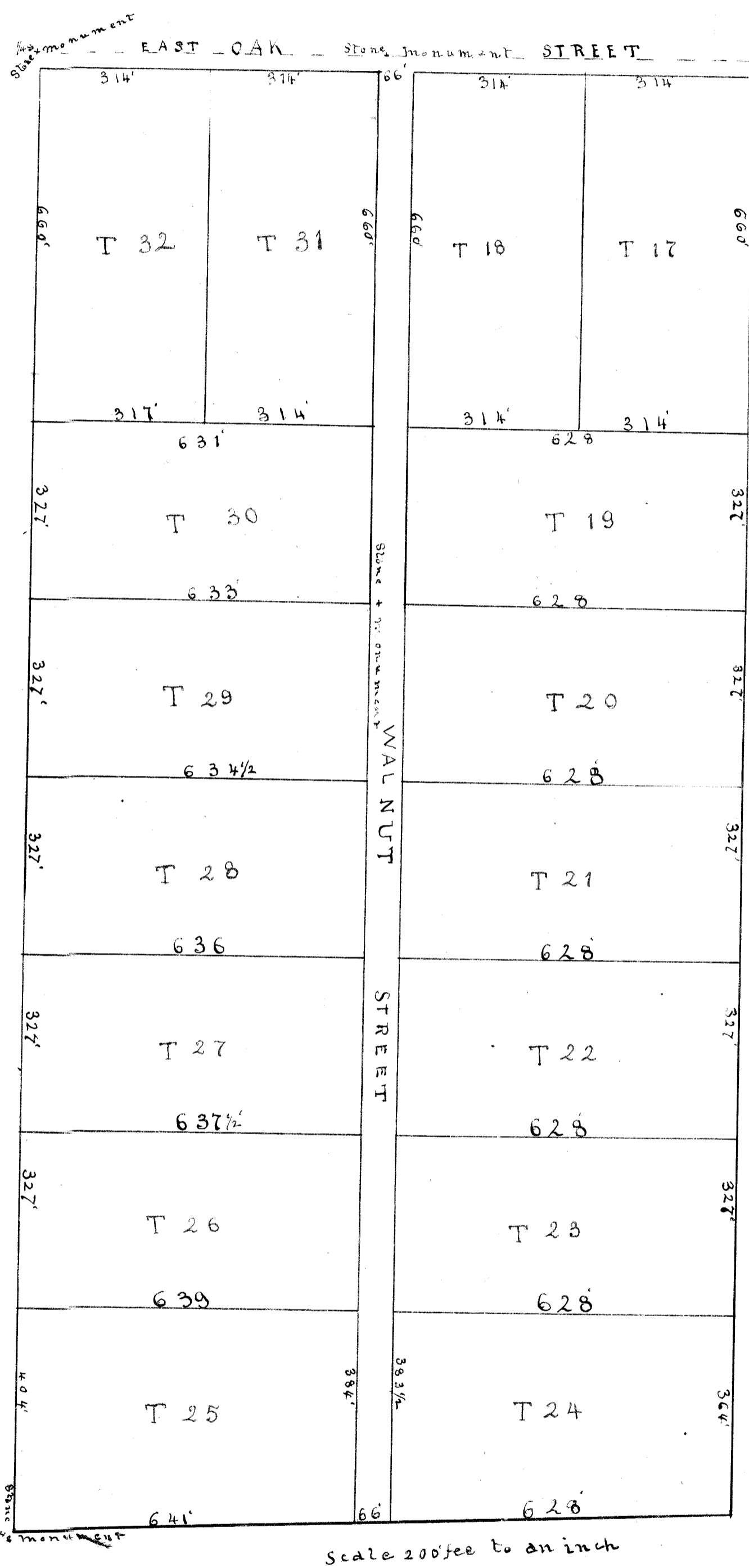
HAS caused the same to be surveyed and laid out as Holland's Second Addition to the City of BRAINERD as is shown and represented by the annexed plat. And has also caused the said plat to be hereon made to the end that the same may be filed and recorded according to the Statutes in such cases made and provided

*George W. Holland*

State of Minnesota }  
County of Crow Wing } ss

Be it Remembered that on this 4<sup>th</sup> day of September A.D. 1899 personally appeared before me George W Holland to me well known to be the person who executed the annexed plat and the certificate thereon and acknowledged the same to have been made by him to the end that the same might be recorded according to law.

J. C. Blewitt  
Notary Public.



Holland's Second Addition to the City of Brainerd Crow Wing County State of Minnesota is located on the West 1/2 of the SE 1/4 of Sec 30 Town 45 N Range 30 W of the 4th P. Mer. The Plat comprises sixteen Tracts of Five acres each more or less numbered from 17 to 32

Size of Tracts as exhibited on annexed plat

Walnut Street is 60 feet wide running North and South.

East Oak Street is 30 feet wide on the Addition

Stone monuments marked with a cross + thus are placed as follows 15 feet East and 30 feet North of NE corner Tract 31. 15 feet East of West line of Walnut Street between Tracts 29 and 30. At 1/4 Sec corner between sections 30 and 31. At 1/4 Sec corner Centre of Sec 30

Robert K Whitley  
City Engineer

State of Minnesota }  
County of Crow Wing }

Be it remembered that on this 4<sup>th</sup> day of September AD 1899 personally appeared before me Robert K Whitley to me well known to be the identical person who made the annexed plat and acknowledged the same to have been made by him from actual surveys. And to be correct to the best of his knowledge and belief

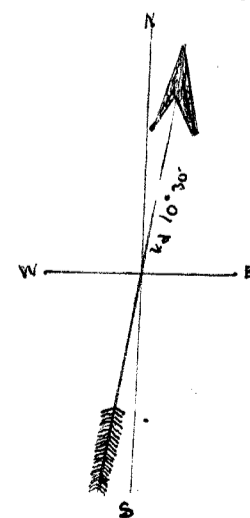
*H. S. McCluskey*  
Notary Public.

Office of City Clerk }  
City of Brainerd }  
Crow Wing County }

I hereby certify that the annexed plat was approved by the City Council September 6<sup>th</sup> 1899

Attest *J. R. Jarrow*  
City Clerk

*Henry S. Cohen*  
Vice Pres of Council



State of Minnesota }  
County of Crow Wing }

Surveyed and Platted  
by  
R K Whitley CE  
City Engineer  
Brainerd Minn  
August 1899

I, H. J. Spencer, Registrar of Deeds within and for said County and State, do hereby certify that the annexed and foregoing plat was filed for record on the 31<sup>st</sup> day of July A.D. 1900, at 3 o'clock P.M. and entered in Book of Town plats

I witness my hand and official seal this 31<sup>st</sup> day of July A.D. 1900.

*H. J. Spencer*, Registrar of Deeds

State of Minnesota }  
County of Crow Wing }

I, J. H. Adams, County Auditor of Crow Wing County, State of Minnesota do hereby certify that there are no due or unpaid taxes on the within and foregoing described Real Estate.

Witness my hand and official seal this 31<sup>st</sup> day of July 1900

*J. H. Adams*  
County Auditor