

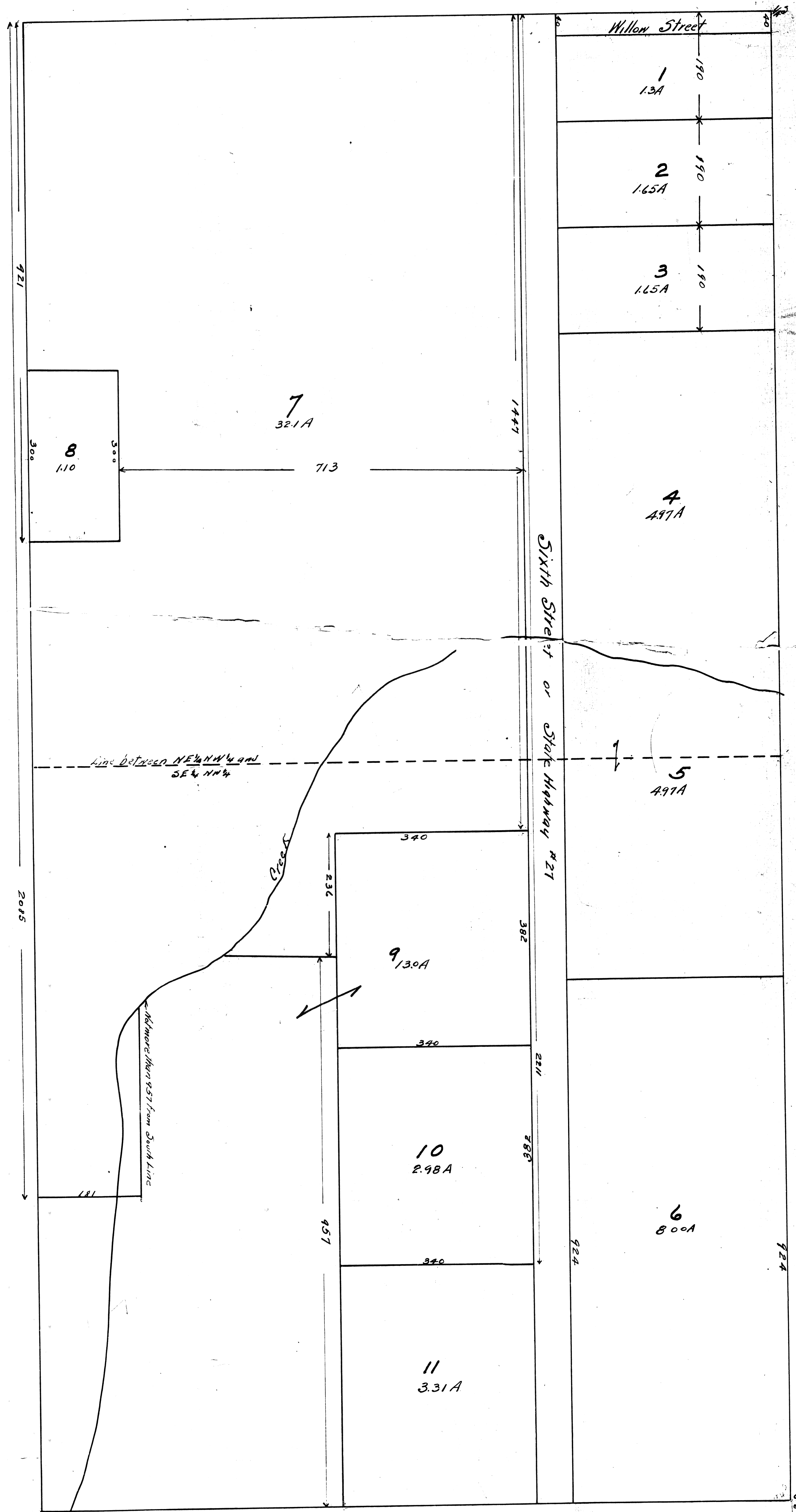
AUDITOR'S PLAT OF E 1/2 NW 1/4 SEC 36 T45N R31W

Scale 1" = 100'

State of Minnesota } ss
 County of Crow Wing }
 I, C.M. Mahlum, do hereby certify
 that this is a true plat of the E 1/2 NW 1/4 of Section 36,
 T45N R31W and that it was made at my direction
 from County records, for taxation purposes, pursuant
 to Section 2219, General Statutes of 1923 and that
 due notice was given to all owners as provided
 by law
 Witness my hand and seal this 1 day of May 1930
 C.M. Mahlum
 Auditor
 Crow Wing County, Minnesota

I, Louis Knudsen, County Surveyor, for
 Crow Wing County, Minnesota do hereby
 certify that I have made the adjoined
 Auditor's Plat from County records and
 the same is correct to the best of my
 knowledge and belief.
 Louis Knudsen
 County Surveyor

98892
 This Auditor's Plat of the E 1/2 NW 1/4
 of Section 36, T45N R31W was filed in my office this 8th day
 of January 1930 at 9 o'clock P.M.
 J.E.H. Venthus
 Register of Deeds
 Crow Wing County
 Minnesota.



Carter
Sec 36